

**500' Radius
Owned by LODGE CREEK LAND CO LLC**

20-13-07000-0001
PLUM CREEK TIMBER CO L P
PO BOX 1990
COLUMBIA FALLS MT 59912

20-13-08000-0004
STATE OF WASH (PARKS & REC)
7150 CLEANWATER LN
OLYMPIA WA 98504

20-13-08000-0006
MONAHAN, R.E.
PO BOX 6171
KENT WA 98064

20-13-08000-0007
MONAHAN, R.E.
PO BOX 6171
KENT WA 98064

20-13-08000-0008
MONAHAN, R.E.
PO BOX 6171
KENT WA 98064

20-13-08000-0010
STATE OF WASH
DEPT FISH AND WILDLIFE
600 CAPITOL WAY N
OLYMPIA WA 98501-1091

20-13-08000-0011
STATE OF WASH
DEPT FISH AND WILDLIFE
600 CAPITOL WAY N
OLYMPIA WA 98501-1091

20-13-08000-0012
STATE OF WASH
DEPT FISH AND WILDLIFE
600 CAPITOL WAY N
OLYMPIA WA 98501-1091

20-13-08000-0015
STATE OF WASH
DEPT FISH AND WILDLIFE
600 CAPITOL WAY N
OLYMPIA WA 98501-1091

20-13-08000-0018
STATE OF WASH (PARKS & REC)
7150 CLEANWATER LN
OLYMPIA WA 98504

20-13-08000-0020
NORTHWEST ECOSYSTEM ALLIANCE
3414 1/2 FREMONT AVE
SEATTLE WA 98103

20-13-09020-0007
STATE OF WASH (PARKS & REC)
7150 CLEANWATER LN
OLYMPIA WA 98504

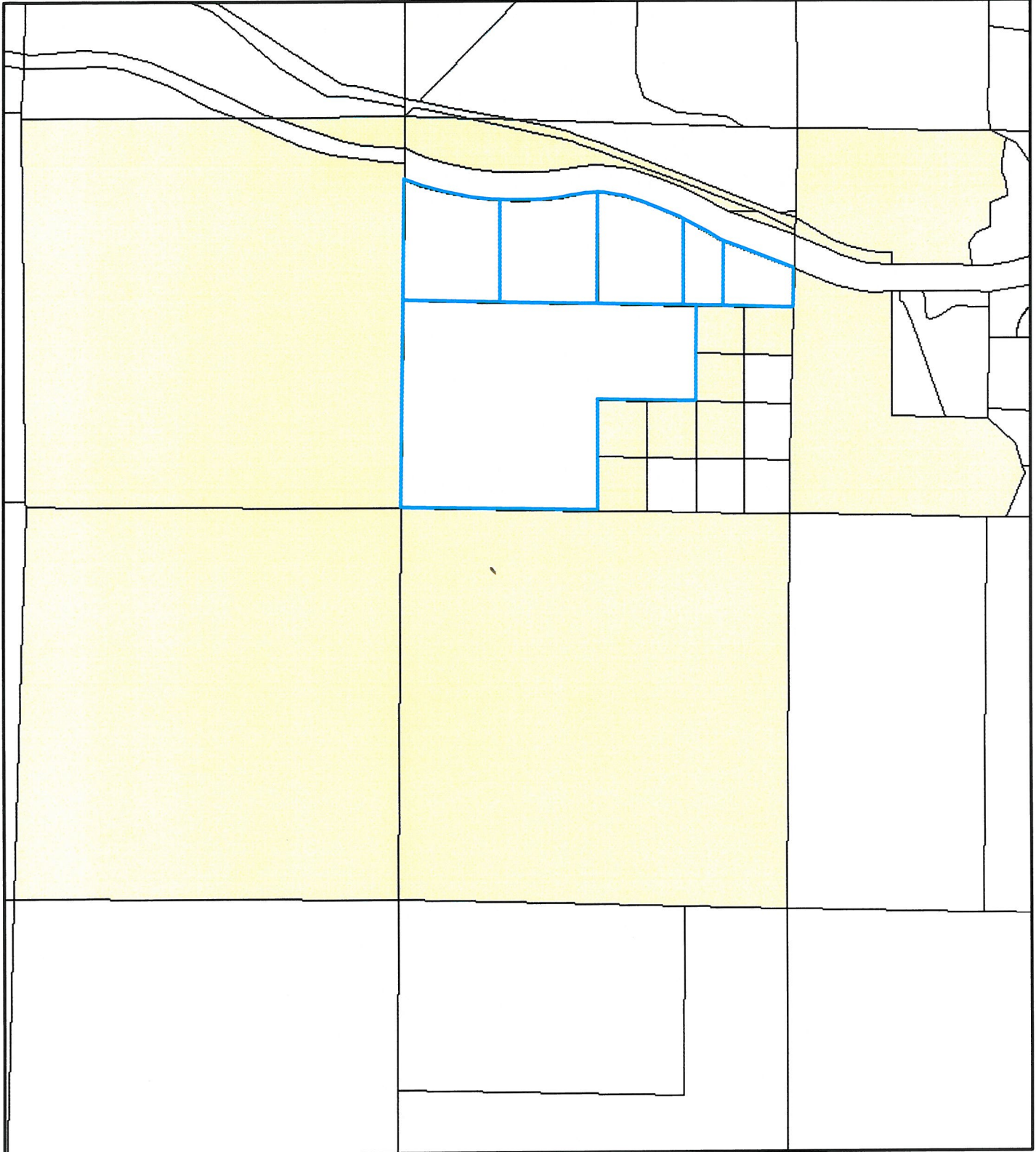
20-13-09090-0311
STATE OF WASH WILDLIFE
REAL ESTATE DIVISION
600 N CAPITOL WAY
OLYMPIA WA 98502-

20-13-17000-0001
PLUM CREEK TIMBER CO L P
PO BOX 1990
COLUMBIA FALLS MT 59912

20-13-18000-0001
AMERICAN FOREST HOLDINGS LLC
660 MADISON AVE 14TH FL
NEW YORK NY 10065-


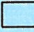

RECEIVED
APR 11 2008
Kittitas County
CDS

Lodge Creek Land Co LLC



1 inch equals 0.34 miles

Legend

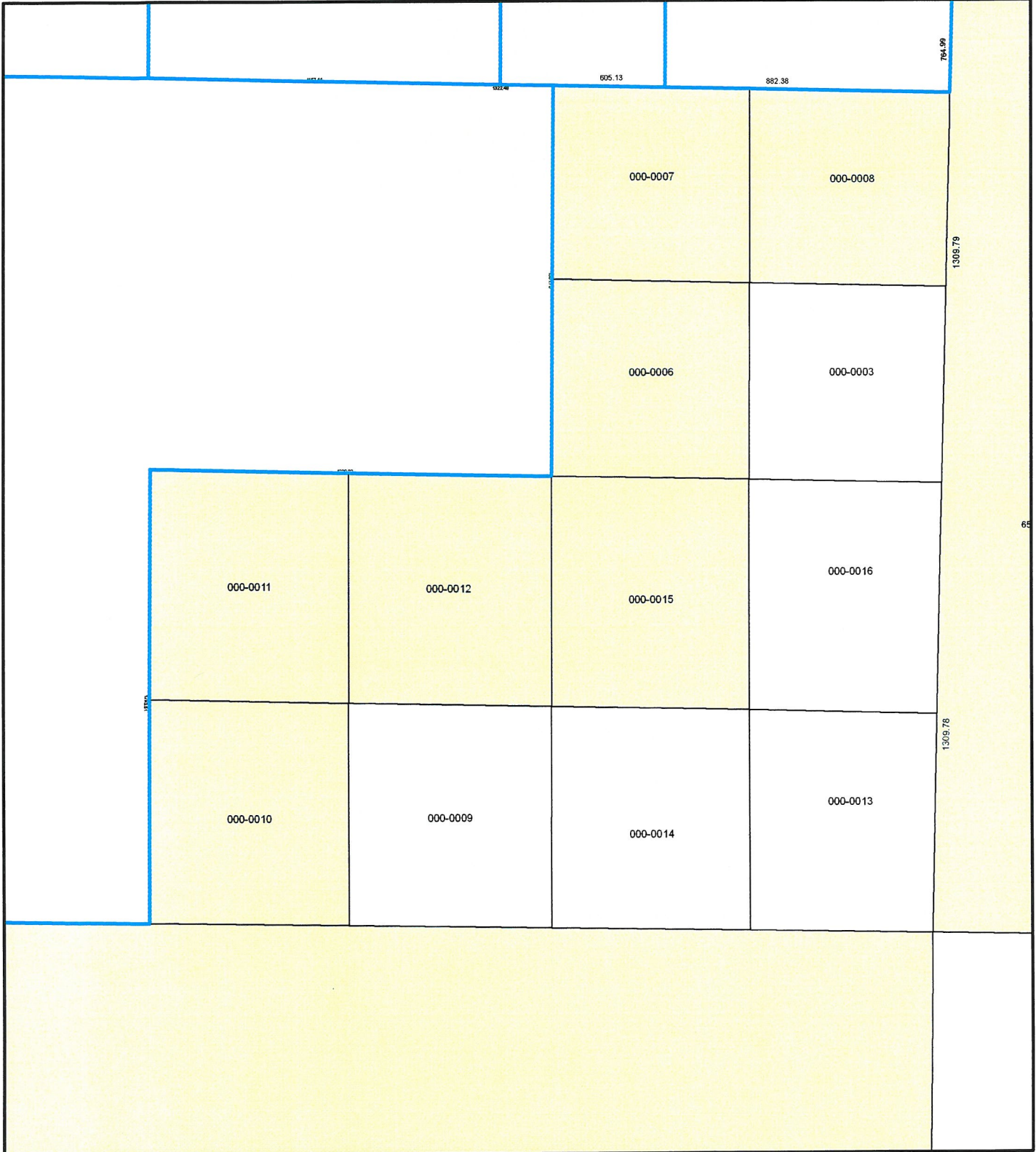
-  Buffer Result
-  Tax Parcels
-  Rights of Way

Disclaimer:

Kittitas County makes every effort to produce and publish the most current and accurate information possible. No warranties, expressed or implied, are provided for the data provided, its use, or its interpretation. Kittitas County does not guarantee the accuracy of the material contained herein and is not responsible for any misuse or representations by others regarding this information or its derivatives.



Lodge Creek Land Co LLC



1 inch equals 0.08 miles

Legend

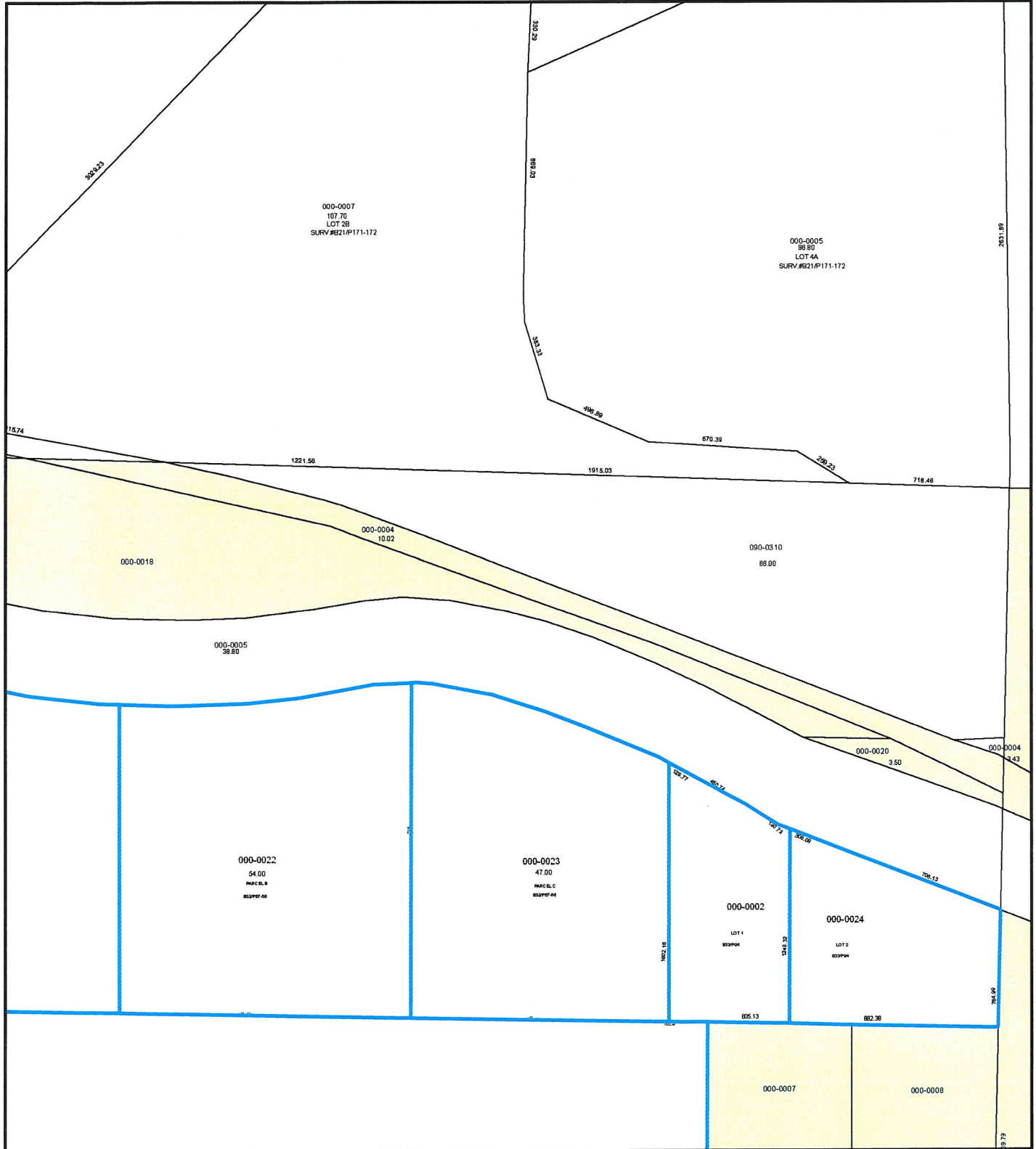
- Buffer Result
- Tax Parcels
- Rights of Way

Disclaimer:

Kittitas County makes every effort to produce and publish the most current and accurate information possible. No warranties, expressed or implied, are provided for the data provided, its use, or its interpretation. Kittitas County does not guarantee the accuracy of the material contained herein and is not responsible for any misuse or representations by others regarding this information or its derivatives.



Lodge Creek Land Co LLC



1 inch equals 0.11 miles

Legend

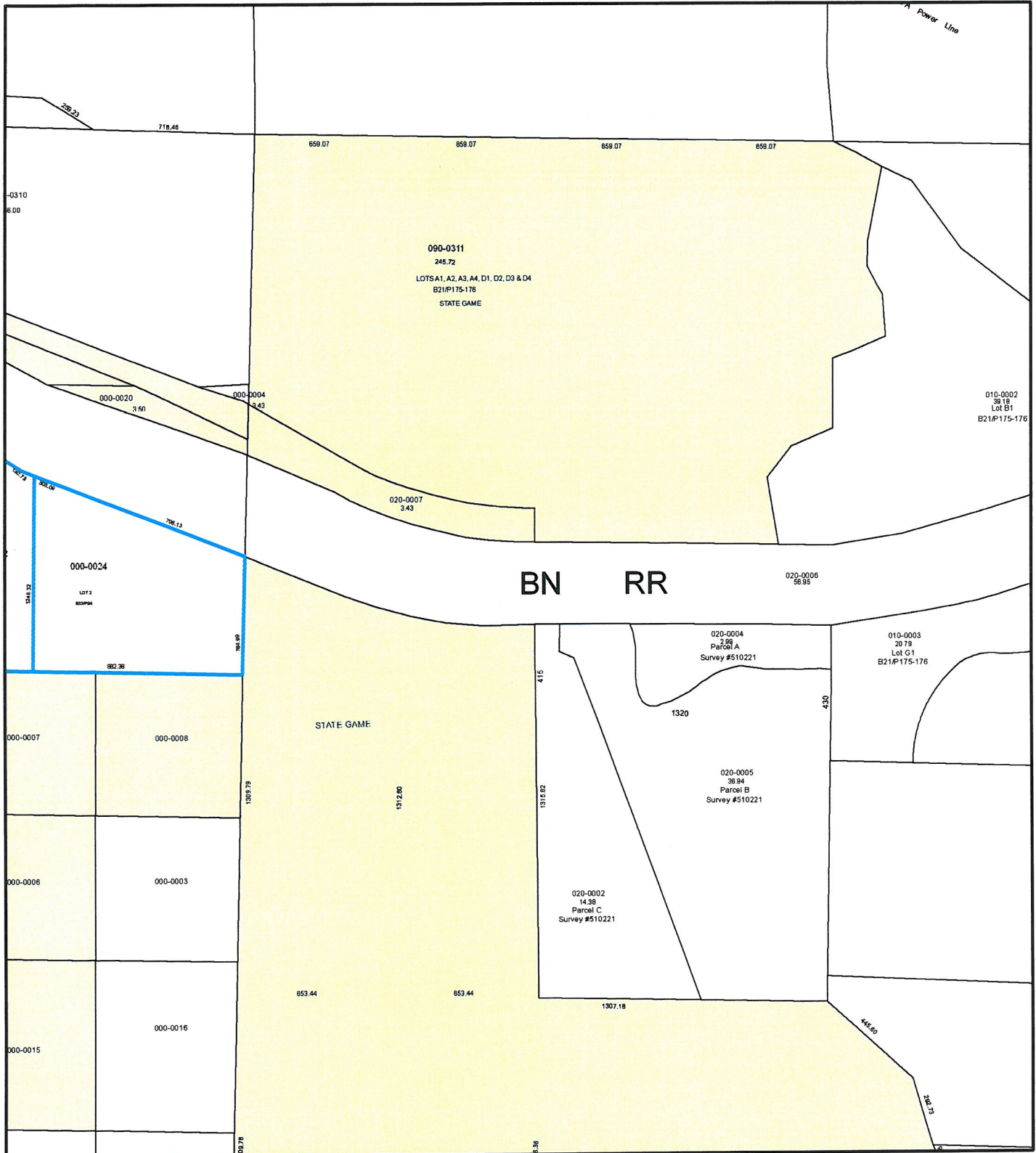
- Buffer Result
- Tax Parcels
- Rights of Way

Disclaimer:

Kittitas County makes every effort to produce and publish the most current and accurate information possible. No warranties, expressed or implied, are provided for the data provided, its use, or its interpretation. Kittitas County does not guarantee the accuracy of the material contained herein and is not responsible for any misuse or representations by others regarding this information or its derivatives.



Lodge Creek Land Co LLC



BN RR

1 inch equals 0.11 miles

Legend

- Buffer Result
- Tax Parcels
- Rights of Way

Disclaimer:

Kittitas County makes every effort to produce and publish the most current and accurate information possible. No warranties, expressed or implied, are provided for the data provided, its use, or its interpretation. Kittitas County does not guarantee the accuracy of the material contained herein and is not responsible for any misuse or representations by others regarding this information or its derivatives.

